



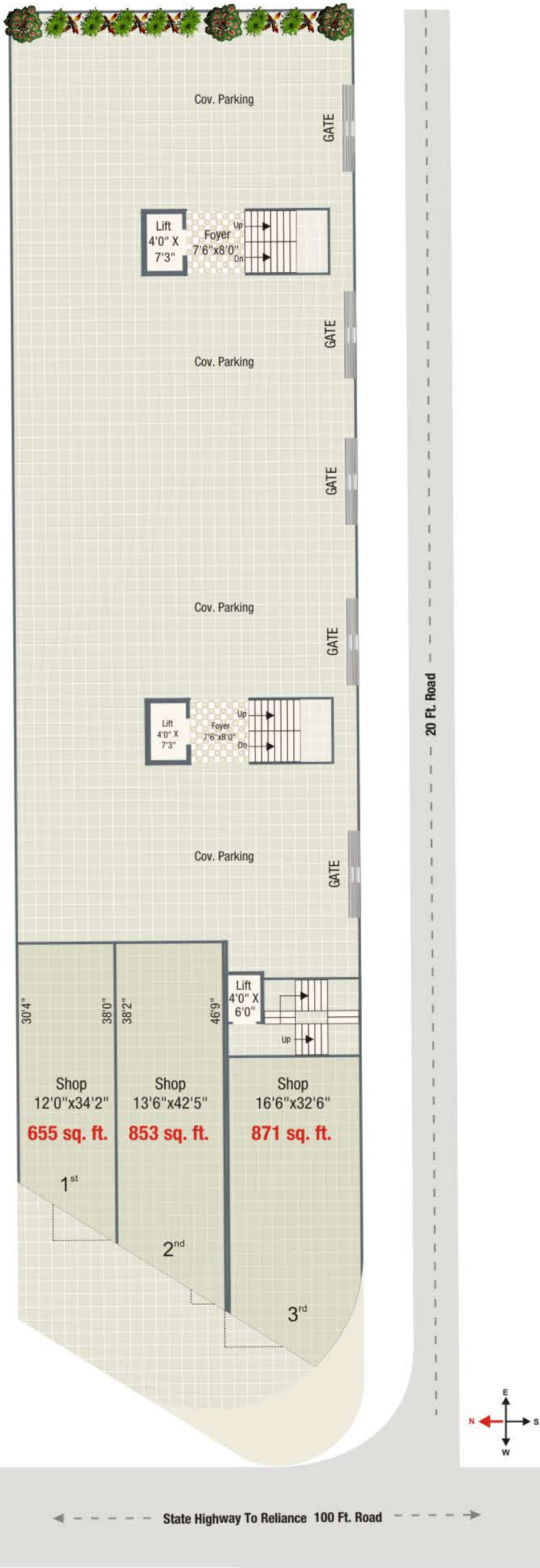
Ambience

1 & 2 BHK
STUDIO APARTMENT





dami name & shutter



103 TO 503
718 Sq. Ft.

102 TO 502
718 Sq. Ft.

103 TO 503
718 Sq. Ft.

102 TO 502
718 Sq. Ft.

102 TO 502
1213 Sq. Ft.

104 TO 504
718 Sq. Ft.

101 TO 501
718 Sq. Ft.

104 TO 504
718 Sq. Ft.

101 TO 501
718 Sq. Ft.

101 TO 501
1186 Sq. Ft.

WING - C

WING - B

WING - A

2nd., 3rd., 4th., 5th. Typical Floor Plan

103 TO 503
718 Sq. Ft.

102 TO 502
718 Sq. Ft.

103 TO 503
718 Sq. Ft.

102 TO 502
718 Sq. Ft.

102 TO 502
1213 Sq. Ft.

Open To Sky

Open To Sky

Open To Sky

Open To Sky

Open To Sky



WING - C

WING - B

WING - A

20 Ft. Road

State Highway To Reliance 100 Ft. Road



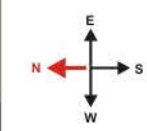
102 TO 502
718 Sq. Ft.

101 TO 501
718 Sq. Ft.



102 TO 502
1213 Sq. Ft.

101 TO 501
1186 Sq. Ft.

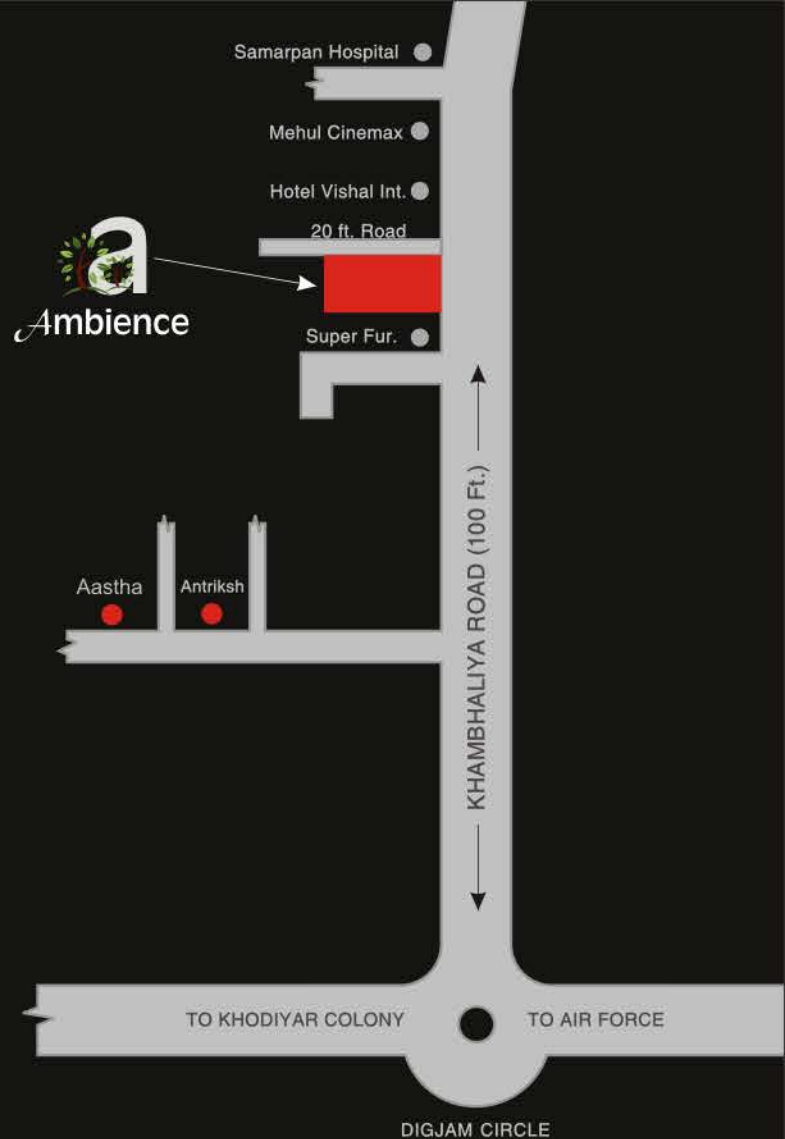


FACILITIES :

- I Earthquake resistant R.C.C. Frame Structure as per structural design with good quality material.
- I Internal smooth plaster & sand face plaster on exterior surface.
- I Attractive main door and all other flush doors.
- I Three tracks powder coated aluminum section window.
- I Vitrified tiles flooring in all rooms of the apartment.
- I Provision for TV/Telephone / AC's and other electronics appliances points.
- I Good Quality granite platform with S.S. sink and tiles up to slab level in kitchen.
- I Toilet : Attractive tiles up to slab level.
- I Attractive glaze tiles in wash area.
- I Concealed Plumbing With C.P. Fittings and Sanitary Wares.
- I Emulsion paint on interior Walls & 100% Acrylic emulsion paint on exterior walls.
- I Water proofing in balconies, roof slab & toilet sunk slab.

AMENITIES

- I Every flat breathes in full air and light.
- I Marketable clear title and J.M.C approved building plan.
- I Spacious & attractive entrance foyer.
- I Attractive main entrance gate.
- I Standard company's 3 (three) lifts.
- I Flat to flat and flat to security intercom system.
- I Power back-up for common area including elevator and parking.
- I Beautiful and attractive elevation.
- I Ample parking space at ground floor.
- I Common toilet at ground floor.
- I Attractive name plat of flat owner's at ground floor.



Site Address :

Nr. Hotel Vishal International,
Before Mehul Cinemax,
Khambhadia Main Highway, Jamnagar.

A Project Developed By :



Corporate Office :

4th floor, "ALFA", Near M.P. House,
Opp. Sadguru Nagar, Saru-Section Road,
Jamnagar. Ph. : 0288 2540091

website : www.home-maker.in

e-mail : inquiry@home-maker.in

Builders & Developers :

NISHITH SHAH	DIVYESH SHAH	DHIMANT SHAH
97148 15158	98242 14452	98242 14451

Note. :

- (1) Payment of all extra work to be executed shall be made in advance.
- (2) Stamp Duty towards registration shall be borne by the client.
- (3) Municipal corporations & GEB charges, if any ,shall be borne by client.
- (4) Any central or state govt. taxes, if applicable shall have to borne by the clients.
- (5) All members shall have to essentially be the part of the society formed by the Association of members & shall abide by the society by-laws.

The information contained in this brochure is indicative of the kind of development that is proposed. It is prepared & issued in good faith and is for guidance only. It dose not constitute part of an offer or contract. Subject to the approval of the authorities of in the interest of the continuing improvement, the promoters reserve the rights to change plans, No. of storeys, specifications of features without prior notice of obligation. Guidelines are enforced for not allowing grills, flower pots etc. to be fixed outside windows or any changes to be made in external elevation. All the images are just for idealization.

Consulting Engineer : "UTTAM ART", K. D. Complex, Indira road, , jamnagar.
Structural Engineer : "NIRMAN ASSOCIATES", Modern Market, Jamnagar.
Exterior Designer : Abhay Kotak, 090677 57677